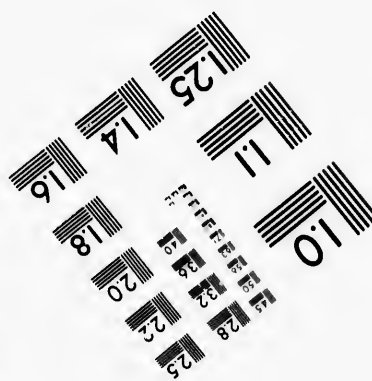
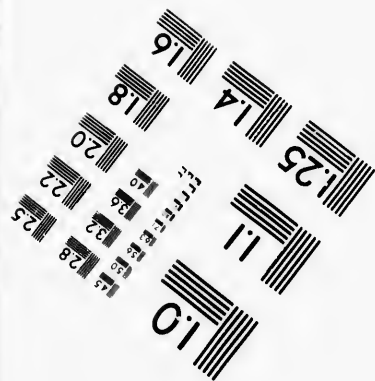
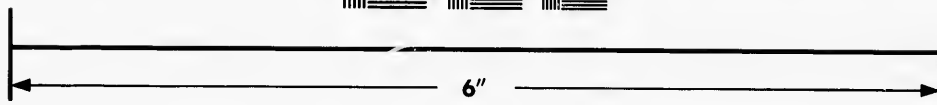
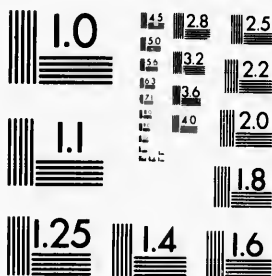


**IMAGE EVALUATION  
TEST TARGET (MT-3)**



**Photographic  
Sciences  
Corporation**

23 WEST MAIN STREET  
WEBSTER, N.Y. 14580  
(716) 872-4503

**CIHM/ICMH  
Microfiche  
Series.**

**CIHM/ICMH  
Collection de  
microfiches.**



Canadian Institute for Historical Microreproductions / Institut canadien de microreproductions historiques

**© 1982**

Technical and Bibliographic Notes/Notes techniques et bibliographiques

The Institute has attempted to obtain the best original copy available for filming. Features of this copy which may be bibliographically unique, which may alter any of the images in the reproduction, or which may significantly change the usual method of filming, are checked below.

L'Institut a microfilmé le meilleur exemplaire qu'il lui a été possible de se procurer. Les détails de cet exemplaire qui sont peut-être uniques du point de vue bibliographique, qui peuvent modifier une image reproduite, ou qui peuvent exiger une modification dans la méthode normale de filmage sont indiqués ci-dessous.

- Coloured covers/  
Couverture de couleur
- Covers damaged/  
Couverture endommagée
- Covers restored and/or laminated/  
Couverture restaurée et/ou pelliculée
- Cover title missing/  
Le titre de couverture manque
- Coloured maps/  
Cartes géographiques en couleur
- Coloured ink (i.e. other than blue or black)/  
Encre de couleur (i.e. autre que bleue ou noire)
- Coloured plates and/or illustrations/  
Planches et/ou illustrations en couleur
- Bound with other material/  
Relié avec d'autres documents
- Tight binding may cause shadows or distortion along interior margin/  
La reliure serrée peut causer de l'ombre ou de la distortion le long de la marge intérieure
- Blank leaves added during restoration may appear within the text. Whenever possible, these have been omitted from filming/  
Il se peut que certaines pages blanches ajoutées lors d'une restauration apparaissent dans le texte, mais, lorsque cela était possible, ces pages n'ont pas été filmées.
- Additional comments:/  
Commentaires supplémentaires:

- Coloured pages/  
Pages de couleur
- Pages damaged/  
Pages endommagées
- Pages restored and/or laminated/  
Pages restaurées et/ou pelliculées
- Pages discoloured, stained or foxed/  
Pages décolorées, tachetées ou piquées
- Pages detached/  
Pages détachées
- Showthrough/  
Transparence
- Quality of print varies/  
Qualité inégale de l'impression
- Includes supplementary material/  
Comprend du matériel supplémentaire
- Only edition available/  
Seule édition disponible
- Pages wholly or partially obscured by errata slips, tissues, etc., have been refilmed to ensure the best possible image/  
Les pages totalement ou partiellement obscurcies par un feuillet d'errata, une pelure, etc., ont été filmées à nouveau de façon à obtenir la meilleure image possible.

This item is filmed at the reduction ratio checked below/  
Ce document est filmé au taux de réduction indiqué ci-dessous.

10X	14X	18X	22X	26X	30X
<input type="checkbox"/>	<input type="checkbox"/>	<input type="checkbox"/>	<input type="checkbox"/>	<input checked="" type="checkbox"/>	<input type="checkbox"/>
12X	16X	20X	24X	28X	32X

The c  
to the

The i  
possi  
of the  
filmin

Origin  
begin  
the la  
sion,  
other  
first p  
sion,  
or illu

The la  
shall  
TINU  
which

Maps  
differ  
entire  
begin  
right  
requir  
metho

The copy filmed here has been reproduced thanks to the generosity of:

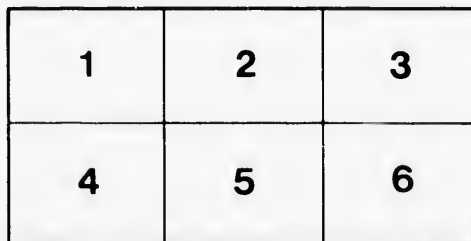
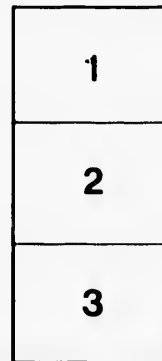
Library Division  
Provincial Archives of British Columbia

The images appearing here are the best quality possible considering the condition and legibility of the original copy and in keeping with the filming contract specifications.

Original copies in printed paper covers are filmed beginning with the front cover and ending on the last page with a printed or illustrated impression, or the back cover when appropriate. All other original copies are filmed beginning on the first page with a printed or illustrated impression, and ending on the last page with a printed or illustrated impression.

The last recorded frame on each microfiche shall contain the symbol  $\rightarrow$  (meaning "CONTINUED"), or the symbol  $\nabla$  (meaning "END"), whichever applies.

Maps, plates, charts, etc., may be filmed at different reduction ratios. Those too large to be entirely included in one exposure are filmed beginning in the upper left hand corner, left to right and top to bottom, as many frames as required. The following diagrams illustrate the method:



L'exemplaire filmé fut reproduit grâce à la générosité de:

Library Division  
Provincial Archives of British Columbia

Les images suivantes ont été reproduites avec le plus grand soin, compte tenu de la condition et de la netteté de l'exemplaire filmé, et en conformité avec les conditions du contrat de filmage.

Les exemplaires originaux dont la couverture en papier est imprimée sont filmés en commençant par le premier plat et en terminant soit par la dernière page qui comporte une empreinte d'impression ou d'illustration, soit par le second plat, selon le cas. Tous les autres exemplaires originaux sont filmés en commençant par la première page qui comporte une empreinte d'impression ou d'illustration et en terminant par la dernière page qui comporte une telle empreinte.

Un des symboles suivants apparaîtra sur la dernière image de chaque microfiche, selon le cas: le symbole  $\rightarrow$  signifie "A SUIVRE", le symbole  $\nabla$  signifie "FIN".

Les cartes, planches, tableaux, etc., peuvent être filmés à des taux de réduction différents. Lorsque le document est trop grand pour être reproduit en un seul cliché, il est filmé à partir de l'angle supérieur gauche, de gauche à droite, et de haut en bas, en prenant le nombre d'images nécessaire. Les diagrammes suivants illustrent la méthode.

NWp  
223.1  
C562re

# Reformed Episcopal Church,

♦♦♦ VICTORIA, B. C. ♦♦♦

## Report of Church Wardens from March 31st, 1879, to March 31st, 1880.

### RECEIPTS.

Balance in hand March 31st, 1879	\$ 81 44
Pew Rents to March 31st, 1880	1,368 63
Offerories	1,279 25
Proceeds from Bazaar	1,000 00
Private donations	30 00
Donation from Bishop Cridge	50 00
Proceeds of sale of prayer books	8 10
Reading desk surplus fund	4 00
Offerory for poor	18 05
	\$3,869 47

### PAYMENTS.

Stipends—	
The Bishop (12 months)	\$2,000 00
Organist \$240, Sexton \$79, J. Duttall \$20,	339 00
Interest on loan	246 27
Cash redemption of subscription	476 10
Tuning organ, and music	26 12
Alms offering for distribution by Bishop	18 05
Gas	86 80
Discount on silver to the Bank of British North America	24 26
Alcohol	14 00
Water rate	12 00
New bellows to organ	130 00
Lengthening chimney	68 97
Washing surplices	9 75
Advertising	7 00
Stationery	32 50
Repairs to Church	18 25
Wood and coal	76 75
A. & W. Wilson, account 1877-1879	22 90
T. N. Hibben & Co., prayer books	4 75
Gas lamp to organ	8 18
Insurance on church, school-house and organ	189 00
Cash on hand March 31st, 1880	37 52
	\$3,869 47

### FUNDED DEBT.

April 1st, 1879,	\$4,090 50
March 31st, 1880,	3,614 40
Reduction	476 10
Cash in Savings Bank, assistant minister fund	231 21
"    "    "    Indigent Home Fund	56 50

The foregoing statement embraces a period of twelve months, and in view of the depressed state of the times, compared with the previous year, the revenue exhibits a most gratifying proof of the continued liberality and zealous support for which the congregation has been distinguished since its organization.

The Churchwardens feel it their duty to mention that the pew rents are considerably in arrear, and have been unable to discharge all liabilities. The stipend to the Bishop for the month of March being still due.

During the past year the Rev. J. B. Chantrell has been appointed assistant minister to the Bishop, and Principal of the Grammar School.

The Church Committee has recommended that the sum of \$30 per month be the contribution of the congregation towards his stipend, and that a special subscription list, dating from the commencement of the year, be formed for the collection of this amount.

The sum of \$30 was contributed by private subscriptions for the purchase of a Lectern.

D. R. HARRIS, / Churchwardens.  
CHAS. HAYWARD

*Handwritten:*  
M. Henderson Report  
1879-80

